



NDONDOMEKO YA CHIKONZERO CHOSAMALIRA NKHALANGO KUDERA LA MPONDA

NKHALANGO YOSUNGIDWA YA NTCHISI



ZAMKATIMU

Table of Contents

MAU OTHOKOZA	Error! Bookmark not defined.
MAU ACHIDULE OGWIRITSIDWA NTCHITO MKATIMU OFUNIKA KUWADZIWA.....	Error! Bookmark not defined.
MAU OYAMBA	Error! Bookmark not defined.
1.1 Chithunzithunzi cha Buloko ya Mondaa (Mapu a Buloko ya Mponda)	Error! Bookmark not defined.
2.0 ULAMULIRO PA CHISAMALIRO CHA NKHALANGO	Error! Bookmark not defined.
3.0KUFOTOKOZERA ZA NKHALANGO	Error! Bookmark not defined.
3.1KUFOTOKOZERA MWACHIDULE	Error! Bookmark not defined.
3.1.1 ZOMERA ZOSIYANASIYANA ZA M'DERALI	Error! Bookmark not defined.
3.1.2 MITUNDU YA DOTHY LOSIYANASIYANA	Error! Bookmark not defined.
3.2 MALIRE	Error! Bookmark not defined.
3.3 UMWINI WA MALO	Error! Bookmark not defined.
3.4 OGWIRITSA NTCHITO NKHALANGO	Error! Bookmark not defined.
3.5 NTCHITO ZA NKHALANGO ZAZIKULUZIKULU.....	Error! Bookmark not defined.
4.0 TIMADERA TACHISAMALIRO CHA NKHALANGO (FMUs)	Error! Bookmark not defined.
4.1 ZOLINGA ZAZIKULUZIKULU ZOLUNJIKI KWIENIKWENI DERA LOSAKOLELEKA NDI LOKOLELEKA M'NKHALANGO	Error! Bookmark not defined.
4.2 ZOLINGA ZOCHUPERAPO ZOLUNJIKI KWIENIKWENI DERA LOSAKOLELEKA NDI LOKOLELEKA M'NKHALANGO	Error! Bookmark not defined.
5.0 ZOLINGA ZA CHISAMALIRO CHA NKHALANGO	Error! Bookmark not defined.
5.1 CHOLINGA CHACHIKULU	Error! Bookmark not defined.
5.2 ZOLINGA ZOCHUPERAPO KOMA ZOLUNJIKI KWIENIKWENI NTCHITO YA CHISAMALIRO CHA NKHALANGO	Error! Bookmark not defined.
6.0MALAMULO A CHISAMALIRO CHA PHINDU LOCHOKERA M'NKHALANGO.....	Error! Bookmark not defined.
7.0CHIKONZERO CHA KAGWIRIDWE KANTCHITO	Error! Bookmark not defined.
7.1 NDONDOMEKO YA M'MENE ANTHU AKHOZA KULONDERA/KUYENDERA NKHALANGO.....	Error! Bookmark not defined.
GOME 7.2 Chikonzero cha m'mene ntchito yolondera nkhalango idzayendere.....	Error! Bookmark not defined.
GOME 7.3 Kauniuni wa ndondomeko zofunika kutsatidwa monga mwa chikonzero. Onani zili m'munsizi:	Error! Bookmark not defined.

8.0 KUFOTOKOZERA NTCHITO YA CHIKONZERO CHA KAYENDETSSEDWE KA ZINTHU ZOCHOKERA M'NKHALANGO PADERA- PADERA	Error! Bookmark not defined.
8.1 NDONDOMEKO YA CHISAMALIRO CHA MITENGO YA NKHUNI.....	Error! Bookmark not defined.
8.2NDONDOMEKO YA CHISAMALIRO CHA MITENGO YA MATABWA.....	Error! Bookmark not defined.
8.3NDONDOMEKO YA CHISAMALIRO CHA MITENGO YA PHASO, NSICHI NDI ZINA	Error! Bookmark not defined.
8.4NDONDOMEKO YA CHISAMALIRO CHA ZIPATSO	Error! Bookmark not defined.
8.5 NDONDOMEKO YA CHISAMALIRO CHA MITENGO YA LUZI.....	Error! Bookmark not defined.
8.6 NDONDOMEKO YA CHISAMALIRO CHA MANKHWALA AZITSAMBA	Error! Bookmark not defined.
9.0CHIKONZERO CHA KUGAWANA KWA PHINDU LOCHOKERA MU ZINTHU ZA M'NKHALANGO.....	Error! Bookmark not defined.
GOME 9.1 NDALAMA ZOTOLERA KUCHOKERA MADERA OSIYANASIYANA	Error! Bookmark not defined.
10.0MFUNDO ZOKHUDZA NDALAMA	Error! Bookmark not defined.
10.1GAWO LOYAMBA LA ZOFOTOKOZERA LOLEMBEDWAM'MAGOME...	Error! Bookmark not defined.
10.2 KULOWA NDI KUTULUKA KWA NDALAMA CHAKA NDI CHAKA	Error! Bookmark not defined.
10.2.1GOME 2: CHIYEREKEZO CHA KULOWA NDI KUTULUKA KWA NDALAMA MU BULO KO YA NYANGA	Error! Bookmark not defined.
10.2.3GOME 3: Kuonetsa chiwerengero cha phindu la zintu zochoka m'timadera tating'onoting'ono tam 'nkhalango cha pa chaka	Error! Bookmark not defined.
10.2.4GOME :4 Kuonetsa chiyerekezo chakutsogolo pa ndalama zolowa kuchokera ku ndalama za zilolezo chaka ndi chaka.....	Error! Bookmark not defined.
11.0ZOFOTOKOZERA ZONSE ZIMENE ZALEMBEDWA	Error! Bookmark not defined.
11.1MUTU WOYAMBA: MALAMULO A MGWIRIZANO WOSAMALIRA LIMODZI BULO KO YA CHANIKA.....	Error! Bookmark not defined.
11.2NTCHITO ZA BUNGWE LOYENDETS ZANKHALANGO/AUDINDO	Error! Bookmark not defined.
11.3NTCHITO ZA MAMEMBALA OSANKHIDWA	Error! Bookmark not defined.
11.4KUCHOTSEDWA KWA A PAUDINDO (MAMEMBALA.....	Error! Bookmark not defined.
11.5MFUNDO ZOFUNIKA KUTSATA PAKATI PA AKAZI NDI AMUNA PAKUSASIYANA KWAO PAMAUDINDO AWO	Error! Bookmark not defined.
11.6NDONDOMEKO YA NTCHITO YOSUNGA ZOLEMBEDWA ZONSE ZOKHUDZA NDALAMA ZOLOWA NDI ZOTULUKA	Error! Bookmark not defined.
12.0KUUNIKIDWANSO KWA MALAMULO A BUNGWELI.....	Error! Bookmark not defined.
12.1KUGAWANA PHINDU LA M'NKHALANGO	Error! Bookmark not defined.

12.2KUYAMBA KUGWIRA NTCHITO KWA MALAMULO ANG'ONO A BULOKOYI	Error! Bookmark not defined
13.0MGWIRIZANO PACHISAMALIRO CHA NKHALANGO PAKATI PA BOMA NDI ANTHU	32
13.1MGWIRIZANO WOYENDETSA LIMODZI NTCHITO ZACHISAMALIRO CHANKHALANGO	32
13.2CHİYAMBI, KUTALIKA KWA NTHAWI YAKE NDI KUTHA KWAKE KWA MGWIRIZANO	37
13.3NTCHITO YOLEMBA NDI KUIKA MALIRE	39

MAU OTHOKOZA

Tifuna kuthokoza kuchokera pansi pa mtima anthu talemba m'munsiwa kaamba ka zithandizo zimene adapereka pa nthawi yokonza ndondomeko ya chikonzero chosamalira nkhalango ya buloko ya Mponda. Anthuwa ndi a GVH Mponda, Gogo Kasakula ndi mamembala onse a m'dera la Mponda.

Tikuperekanso kuthokoza kwathu kwa onse ogwira ntchito zankhalango ku ofesi ya boma awa: Mrs T. Mboma (Ndovie) (DFO), Mr G. Misomali (ADFO), E. Mkanalumo Banda (FA), W. Banda, L. Sailota, P.Lungu (FLS), Mr Makowa (Driver), Mr W. Chikopa ndi S. Sibale (GPS/GIS) chifukwa cha mathandizo awo osiyanasiyana pa maluso awo komanso zina zofunikira.

Tikuthokozanso akuluakulu oona za nkhalango ochokera ku likulu la zankhalango awa R. W. S. Nyirenda (Mlangizi a za luso wa IFMSLP), T. S. Ketulo, chifukwa cha maluso ndi upangiri awo.

Tikuthokozanso bungwe la EU chifukwa chopeleka thandizo la ndalama pa ntchito zonse zokhazikitsira ndondomeko ya chikonzero chino.

MAU ACHIDULE OGWIRITSIDWA NTCHITO MKATIMU OFUNIKA KUWADZIWA

DFO	: Wamkulu wa zankhalango mu Boma (LA NTCHISI)
TA	: Mwinimtunda/ (chalo/ Gogo)
IFMSLP	: Ndondomeko yotukula kasamalidwe ka nkhalango kuti pakhale kupititsa patsogolo umoyo wa anthu.
EU	: Bungwe la Umodzi wa azungu
FMUs	: Midzi yoona za chisamaliro cha nkhalango
LFO	: Bungwe la kumudzi la zankhalango
FD	: Nthambi ya maofesi a zankhalango (Dipatimenti yoona zankhalango)
BMC	: Bungwe La Chigawo Chachikulu Losamalira za Nkhalango (BMC)
VH	: Mfumu ya m'mudzi
EPA	: Dera lalikulu la chionjezero pa chikonzekero cha ntchito za ulimi
LFMB	: Bungwe loyang'anira chisamaliro cha nkhalango
PCU	: Kagawo kolumikiza m'ndandanda wa zintchito zoyendetsera nkhalango
GVH	: Mfumu yoyang'anira midzi ingapo
NGO	: Bungwe limene silili la boma
VNRMC	: Bungwe la m'mudzi Loyang'anira zachilengedwe
FUG	: Gulu la Mamembala ogwiritsa ntchito nkhalango

1. MAU OYAMBA

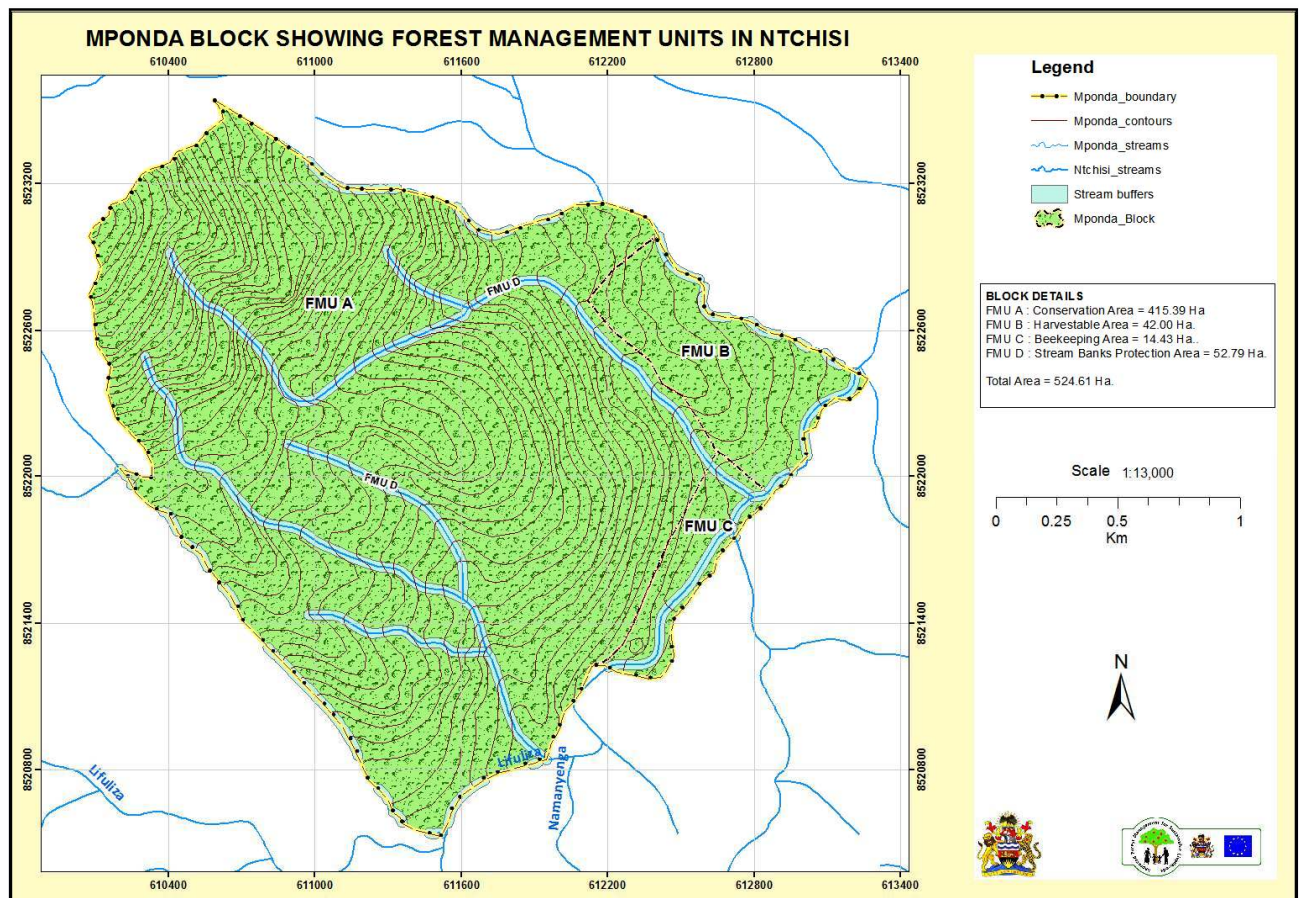
Ndondomeko ino ili kuphera mphongo kukambirana, kuunika, kudziwitsana ndi kufunsira ndiponso kukonzekera kumene kunalipo ndi anthu a dera la Mponda.

Ntchitoyi idatsogoleredwa ndi ogwira ntchito ku ofesi yoona za nkhalango ochokera ku Dipatimenti yoona za nkhalango m'boma la Ntchisi. Cholinga chake ndi kupatsa mphamvu anthu a m'dera la GVH Mponda kupanga chiganizo ndi kutenga udindo komanso kupititsa patsogolo umodzi pa chitetezo, chisamaliro ndi kugwiritsa ntchito mosamala zinthu zonse zochokera m'nkhalango ya mu Buloko ya Mpondakuti adzapezenso zina mtsogolo. Dera limene likugwiridwa ntchitoyi ndi yokwana maekala okwa 9720.

1.1 KUFOTOKOZERA MWACHIDULE

Buloko ya nkhalango ya Mpondaimapedzeka pa mtunda wamakilomita 46 (makumi anayi ndi mphambu zisanu ndi chimodzi) kumadzulo kwa boma la Ntchisindipo ndi Mbali imodzi ya nkhalango yongosungidwa ya Ntchisi. Bulokoyi ndi yaikulu mahekitala 524.61 ndipo ili m'dera la GVH Chanika, mfumu yaikulu Kasakula m'boma la Ntchisi.

1.1 Chithunzithunzi cha Buloko ya Mponda (Mapu a Buloko ya Mponda)



1.1.1 ZOMERA ZOSIYANASIYANA ZA M'DERALI

M'nkhalango ya m'dera la Mpondaili ndi mitengo ya chilengedwe ya mitudu yosiyanasiiyana monga : Kadale, Chipembere, thombozi, Nkulasinga, Nsolo, Kaumbu, Mbanga, Chiyere, msuku, mlombwa, kamphoni, mkuyu, mvunguti, mpasa, mseza, mkalate, Yembeyembe, mzumira, mombo, kanyanyata ndi yina yambiri.

1.1.2 MITUNDU YA DOTHİ LOSIYANASIYANA

Dothi lake kwenikweni ndi dothi la makande otsakanikira ndi lamchenga.

1.2MALIRE

Bulokoyi kumwera idachita malire ndi buloko ya Mpalira, Chazama buloko kumpoto, mtsinje wa Lifuliza kumadzulo komanso nkhalango yobiliwira cha ku m'mawa kwake. Buloko ya Mponda ndi buloko ya Mpalira idachitidwa malire ndi mtsinje wa Kanjoka pamene pakati pa buloko ya Mponda ndi Chazama pali mtsinje wa Kanyerere

1.3 UMWINI WA MALO

Umwini wosamalira nkhalango zosungidwa m'Malawi uli m'manja mwa boma la Malawi ndipo limatengapo mbali ya umwiniwu pa nkhalango yosungidwa ya buloko ya Mponda yomwe ndi mbali imodzi ya nkhalango yosungidwa ya Ntchisi. Chifukwa cha mgwirizano pa chisamaliro cha nkhalango ndi anthu, boma ndi anthu onse adzakhala ndi udindo ndi phindu lofanana lochokera m'nkhalango.

1.4 OGWIRITSA NTCHITO NKHALANGO

Anthu onse ochokera kwa a GVH Mponda alindi mwayi ogwiritsa ntchito nkhalangoyi moyambirira. Anthu onse ochokera midzi yozungurira bulokoyi adzakhala ndi mwayi wozeza zinthu za m'nkhalangoyi kudzera mwa bungwe loyang'anira nkhalango (BMC) imene idzapereka zilolezo zoyenerera katundu wochokera m'nkhalango amene munthu adzafune kuzeza m'nkhalangomo ndipo m'midziyi ili motere; GVH Mponda mabanja makumi asanu ndi mphambu zisanu ndi chimodzi (56), Kambandanga 1 mabanja makumi awiri ndi mphambu zisanu ndi ziwiri (27), Kambandanga 2 mabanja khumi ndi awiri (12), Mkuthiwa mabanja khumi ndi mphambu zisanu ndi ziwiri (17), Gunda mabanja okwana makumi awiri (20), Mataka mabanja akwana makumi awiri ndi chimodzi (21), Nankhombol

mabanja makumi awiri ndi mphambu zisanu ndi zinayi (29) komanso Nankhombo2 mabanja makumi awiri ndi mphambu zisanu.

1.5 NTCHITO ZA NKHALANGO ZAZIKULUZIKULU

Buloko imeneyi ndi yofunikira popeza imapereka mwayi kwa ogwiritsa ntchito nkhalango kupeza zinthu zochokera m'nkhalango mosalekeza komanso mosaziononga kuti azizipezabe. Zina mwa zinthuzi ndi nkhu, matabwa, phaso, nsichi, ndawala, luzi, mankhwala a zitsamba komanso bowa. Ngakhale zili chomwecho pamwambapa buloko ya nkhalangoyi imapangitsa kuti mvula isamavute m'derali komanso kupangitsa kuti madzi aziyenda chaka chonse m'mitsinje monga Kanjoka, Kanyelere ndi chang'anjo. Madziwa amagwiritsidwa ntchito yothirira zomera zosiyanasiyana. Pa chifukwa ichi onse ogwiritsa ntchito nkhalangoyi ayenera kuloledwa ndi kupatsidwa mphamvu ndi a bungwe la Mponda BMC popatsidwa chilolezo.

2.0 TIMADERA TACHISAMALIRO CHA NKHALANGO (FMUs)

Buloko ya Mpondaili ndi magawo anayi; FMU A, FMU B, FMU C ndi FMU D

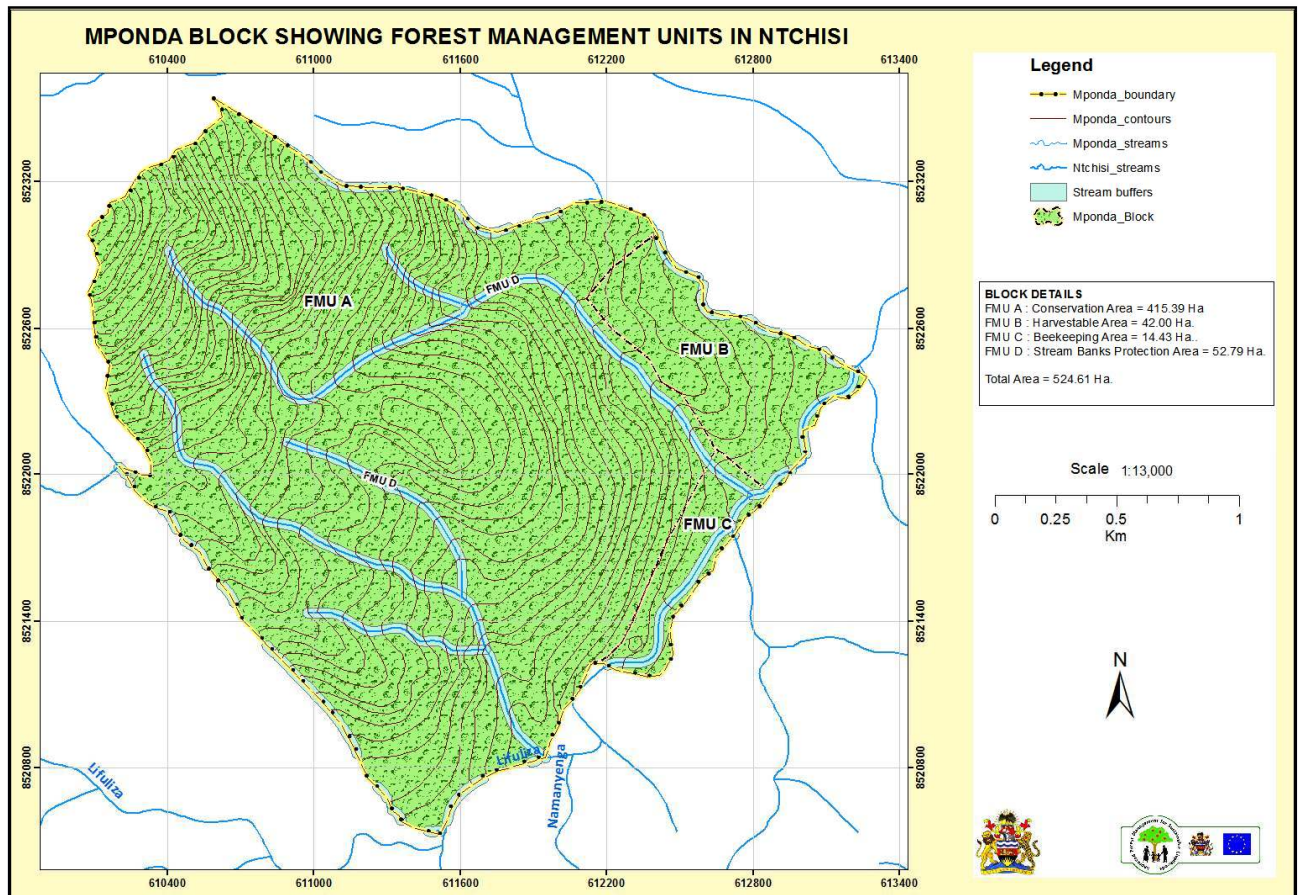
Gawo loyamba (FMU A): Ili ndi gawo limene lili lotetezedwa ndipo lili ndi ma ekala okwanira 415.39.

Gawo lachiwiri (FMU B): Ili ndi dera limene lili ndi mitengo yakathithi komanso ya mitundu ndi misinkhu yosiyanasiyana. Ili ndilo dera limene anthu azidzatengako mitengo, nkhu, mipini, mankhwala ndi zina zochokera ku mitengo komanso zina zochokera m'nkhalango. Ndipo ndi yaikulu mahekitala 42.0.

Gawo la chitatu (FMU C): Ilindi dera limene ulimi wa uchi udzikachitika ndipo ndi lalikulu ma ekala okwanira 14.43.

Gawo la chinayi (FMU D): Ili ndi dera limene lili mphepete mwa mitsinje ndipo ndilalikulu mahekitala okwana 52.79.

MAPU OSONYEZA ZIGAWO ZOSAMALIRA NKHALANGO YA MPONDA



3.0 ZOLINGA ZA CHISAMALIRO CHA NKHALANGO

3.1 CHOLINGA CHACHIKULU

- Cholinga chachikulu ndiko kupereka chisamaliro cha nkhalango pamodzi kuti pakutero padzakhalenso kugwiritsa bwino ntchito zinthu zonse zochokera m'nkhalango, mosungako zina kuti tsiku lina zidzagwirensa ntchito m'makomo ndi kutukula miyoyo ya anthu ozungulira nkhalangoyi.

3.2 ZOLINGA ZOCHEPERAPO KOMA ZOLUNJIKA KWENIKWENI NTCHITO YA CHISAMALIRO CHA NKHALANGO

- a) Kuti anthu apititse patsogolo ntchito yopanga zinthu zofunikira zochokera m'nkhalango, monga phaso, ndawala, nsichi, matabwa, nsungwi ndi nkhu komanso zopangidwa kuchokera ku zinthu zina za m'nkhalango zimene simitengo ayi.
- b) Kuti pakhale chisamaliro chokwanira pa mitengo ndi zomera zimene zimaphukirabe zikadulidwa ndi kuti anthu azitha kupeza zithu zomwe monga mankhwala, bowa, zipatso komanso nyama za mnkhalango.
- c) Kuti anthu akwanitse kupereka chisamaliro komanso kuteteza malo adzidikha

4.0 MALAMULO A CHISAMALIRO CHA PHINDU LOCHOKERA M'NKHALANGO

Malamulo ano adakonzedwa kuti anthu a m'derali azitengapo gawo pa chisamaliro cha Buloko ya Chanika pa chitetezo chake, kuyendetsa kwake ndi kagwiritsidwe ntchito kake ka nkhalangoyi

NO.	Malamulo okhudza mitengo ndi zina zochokera m'nkhalango	Kufotokozera katundu wochokera m'nkhalango	Zilango
1)	Kudula mtengo wa uwitsi opanda chilolezo chochokera ku Bungwe la kumudzi la zankhalango ndi kosaloledwa	Kudula mtengo wa uwitsi opanda chilolezo chochokera ku Bungwe la kumudzi la zankhalango ndi ntchito yoyang'aniridwa ndi Bungwe loyang'anira za nkhalango m'mudzi [Block Mgt. Board] mothandizidwa ndi ogwira ntchito za nkhalango ku Dipatimenti ya za nkhalango	Aliyense wopezeka wolakwa chifukwa chodula nkhu wopanda chilolezo chochokera ku Bungwe la kumudzi loona zankhalango adzalipira chindapusa choyambira MK100.00 mpaka MK20,000 mogwirizana ndi kukula

		[FD staff].	kwa mtengo.
2)	Membala aliyense wa Bungwe la m'mudzi Loyang'anira za nkhalango adzayenera kutengapo gawo kupatula okhawo amene ndi odwala, okalamba ndi olumala.	Ntchito za nkhalango zidzayang'aniridwa ndi Bungwe loyang'anira za nkhalango m'mudzi [Block Mgt. Board] mothandizidwa ndi ogwira ntchito za nkhalango ku Dipatimenti ya za nkhalango [FD staff].	Aliyense wopezeka wolakwa chifukwa chokana kugwira nawo ntchito zosamalira nkhalango ya mudzi adzalipira chindapusa chokwana MK500.00 pa tsiku limodzi logwira ntchito ndipo akalepheraayenera kuchotsedwa
3)	Palibe kutolera mankhwala opanda chiloledzo cha Bungwe loyang'anira za nkhalango m'mudzi (BMC)	Kupedza mankhwala nkhalangoyi ndi kwa ulere kwa omgogwiritsa ntchito pa khomo psmene oguritsa ndi MK1,500.00 koma mutatenga chiloledzo cholowera nkhalangoyi ku Bungwe loyang'anira za nkhalango m'mudzi (BMC)	Aliyense wopezeka wolakwa chifukwa chokatenga mankhwala nkhalangoyi adzalipira chindapusa chokwana MK500.00 ngati ndi ongogwiritsa ntchito pamene okagulitsa adzalipira chindaputsa cha MK300.00
4)	Palibe ndi m'modzi yemwe wololedwa kuyatsa moto kapena kuyambitsa moto m'dera la nkhalango ya mudzi wopanda chilolezo chochokera kwa a bungwe la BMC	Bungwe loyang'anira za nkhalango m'mudzi [BMC] mothandizidwa ndi ogwira ntchito za nkhalango ku Dipatimenti ya za nkhalango [FD staff] adzaonetsetsa udindo woyatsa moto kapena kuyambitsa moto kuteteza dera	Aliyense wopezeka wolakwa chifukwa choyatsa moto wachisawawa kapena kuyambitsa moto wotere m'dera la nkhalangoli wopanda chilolezo chochokera kwa a bungwe la BMC adzalipira chindapusa cha

		la nkhalango ku moto wachisawawa kuti uli m'manja mwawo	MK2,000.00
5)	Palibe wololedwa kucheka matabwa kapena kena kalikonse m'nkhalango ya mudzi wopanda chilolezo chochokera ku Bungwe la kumudzi loona zankhalango	Bungwe loyang'anira za nkhalango m'mudzi (BMC), eni dera mothandizidwa ndi ogwira ntchito za nkhalango ku Dipatimenti ya za nkhalango (FD staff) adzaonetsetsa kuti akukonza maulendo oyendera nkhalango kuletsa ocheka matabwawa	Aliyense wopezeka wolakwa chifukwa chomanga kena kalikonse m'nkhalango ya mudzi wopanda chilolezo chochokera ku Bungwe la kumudzi loona zankhalango adzalipira chinapusa chokwana MK20,000.00
6)	Kutola nkhuhi wopanda chilolezo chochokera ku Bungwe la kumudzi la zankhalango ndi kosaloledwa	Chilolezo chokatola nkhuhi za pamutu ndi MK50.00 pamene pa kubiki mita ndi MK1,500.00 m'nkhalangoyi	Aliyense wopezeka wolakwa chifukwa chokatola nkhuhi wopanda chilolezo chochokera ku Bungwe la kumudzi la zankhalango adzalipira chindapusa chokwana MK1,000.00 ngati ndi pamutu pamene pa kwubiki mita ndi MK3000.00
7)	Palibe wololedwa kulima m'malo abwino m'nkhalango ya mudzi wopanda chilolezo	Oona za chisamaliro cha nkhalango ndi okhawo amene amavomerezedwa kusamalira pa kulima m'nkhalangoyi	Aliyense wopezeka wolakwa chifukwa cholima m'nkhalango ya mudzi wopanda chilolezo chochokera

	chochokera ku Bungwe la kumudzi loona za nkhalango	koma ena onse nkosaloledwa	ku Bungwe la kumudzi la zankhalango adzalipira chindapusa MK50,000.00
8)	Kutentha makala m'nkhalangoyi ndi koletsedwa	Kutentha makala ndi koletsedwa kotheratu	Aliyense wopezeka wolakwa chifukwa chotentha makala mu nkhalangoyi adzalipira chindapusa chokwana MK30,000.00
9)	Kutolera bowa, udzu ndi zipatso opanda chiloledzo cha Bungwe loyang'anira za nkhalango m'mudzi (BMC) m'nkhalango yosungidwayi nkosaloledwa.	Kutolera bowa, udzu ndi zipatso nkhalangoyi ndi kwa ulere ngati munthu watenga chilolezo kuchokera ku Bungwe loyang'anira za nkhalango m'mudzi (BMC),	Aliyense wopezeka wolakwa chifukwa chotolera bowa, udzu ndi zipatso za m'thengo m'nkhalango yosungidwayi adzalipira chindapusa chokwana MK1,000.00
10)	Palibe yemwe adzaloledwa kudula mitengo m'malo otsika ndi muzigwembe	Nkosaloledwa ndi pang'ono pomwe	Aliyense wopezeka wolakwa chifukwa chodula mitengo mmalo otsika, adzidikha ndi muzigwembe adzalipira chindaputsa cha ML20,000.00
11)	Palibe wololedwa kukasaka nyama mu nkhalango ya mudzi wopanda chilolezo chochokera ku Bungwe la	Bungwe loyang'anira za nkhalango m'mudzi (BMC), eni dera mothandizidwa ndi ogwira ntchito za nkhalango ku Dipatimenti ya za nkhalango (FD	Aliyense wopezeka wolakwa chifukwa chosaka nyama mu nkhalango ya mudzi wopanda chilolezo chochokera ku Bungwe la kumudzi la zankhalango adzalipira

	kumudzi la zankhalango	staff)adzaonetsetsa kuti akukonza maulendo oyendera nkhalango kuletsa osaka nyamawa	chinapusa chokwana K30,000.00
--	------------------------	---	-------------------------------

GOME1: DERA LOKOLOLA LA BULOKO YA MPONDA

Malo okololeka (FMU B)	42.0 Ha
Malo otsakololeka (FMU A,D)	468.18 Ha
Malo olima njuchi (FMU C)	14.43 Ha
Chiwerengero cha mabuloko pamodzio	524.61 Ha

TABLE 2: KUYEREKEDZERA KWA KUCHULUKA KWA ZA CHILENGEDWE

DZINA LA ZOKOLOLA	ZONSE PA EKALA	KUCHULUKA KWAKE PA 42.0 EKALA
Nkhuni	4000	168000
Matabwa	2000	84000
Phaso	700	29400
Nsichi	350	14700
Zengo	600	33600
Mitanda	70	2940
Mikangala	1150	48300

GOME 3: ZOKOLOLA ZOMWE ZIMAFUNIKA KUGWIRITSA NTCHITO PA KHOMO

DZINA LA ZOKOLOLA	ZOFUNIKA PA BANJA LILILONSE PA CHAKA	ZOFUNIKA PA CHAKA PA BANJA ONSI 207
Nkhuni	48	9936
Matabwa	8	1680
Phaso	11	2277
Nsichi	15	3105
Zengo	16	3312
Mitanda	0	32
Mikangala	1933	39951

GOME 4: ZOKOLOLA ZOMWE ZIMAPEZEKA NKHALANGOYI

DZINA LA ZOKOLOLA	MMENE ZIMAFUNIKA KU MAANJA 2207	KUCHULUKA KWAKE MUNKKHALANGOYI	KUCHEPA KAPENA KUCHULUKA
Nkhuni	9936	168000	+158064
Matabwa	1680	84000	+82320
Phaso	2277	29400	+27123
Nsichi	3105	14700	+11595
Zengo	3312	33600	+30288
Mitanda	32	2940	+2908
Mikangala	39951	48300	+8349

5.0CHIKONZERO CHA KAGWIRIDWE KANTCHITO

Ntchito zalembedwa m'munsizi zizidzagwirika chaka chilichonse

NAMBALA	NTHAWI	ZOCHITIKA
1	January	Kupereka ziphaso zokazulira kapena kutolera bowa, Kuchititsa misonkhano,Kuyendera Nkhalango, Kubzala mitengo komanso kupereka zilolezo za katundu wosiyanasiyana wochokera m'nkhalango
2	February	Kuchititsa misonkhano,Kuyendera Nkhalango, Kubzala mitengo, kupereka zilolezo za katundu wosiyanasiyana wochokera m'nkhalango komanso kusankha mitengo yosafunikira
3	Marichi	Kudula mitengo ya phaso, ,Kuyendera Nkhalango komanso Kuchititsa misonkhano
4	Epulo	Kudula mitengo ya phaso ndi nkuni, Kuyendera Nkhalango komanso Kuchititsa misonkhano pa mwezi
5	May	Kukonzatso malire a bulokoyi, Kuyendera Nkhalango komanso Kuchititsa misonkhano pa mwezi
6	Juni	Kuchititsa misonkhano,Kuyendera Nkhalango, Kudula mitengo ya phaso ndi nkuni, kuyamba kupanga ma nazale, kufula uchi, Kutenthera nkhalango koyambirira komanso komanso kuyendera mphukira
7	July	Kuchititsa misonkhano pa mwezi,Kuyendera Nkhalango, Kutenthera nkhalango koyambirira, kubzala mbande, kusankhira malo okolola komanso kutolera ndalama pa chilichonse chochokera nkhalango
8	August	Kusamalira mitengo ku nazale, Kuchititsa misonkhano pa mwezi,Kuyendera Nkhalango, kusankhira malo okolola komanso

		kutolera ndalama pa chilichonse chochokera nkhalango
9	September	Kusamalira mitengo ku nazale, Kuchititsa misonkhano pa mwezi, Kuyendera nkhalango komanso kutolera ndalama pa chilichonse chochokera nkhalango
10	October	Kuchititsa misonkhano pa mwezi, kuyendera nkhalango, kutolera ndalama pa chilichonse chochokera nkhalango komanso kusankhira mphukira.
11	November	Kuchititsa misonkhano pa mwezi, kuyendera nkhalango, kudula mitengo ndi nkhuu komanso kukonza nkhalango kukodzekera kudzala mitengo
12	December	Kuchititsa misonkhano pa mwezi, kuyendera nkhalango, komanso kubzala mitengo

Ntchito yopitirira

Kuchititsa misonkhano pa mwezi, kuyendera nkhalango komanso kutolera ndalama pa chilichonse chochokera nkhalango

NDONDOMEKO YA KUYENDERA

- A komiti ya buloko ayenera kukonza ndondomeka yoyendera nkhalango yomwe iyenera kukhala ndi anthu asanu ndi atatu (8) ochokera midzi ya GVH Mponda kawiri pasabata
- Buloko iyenera kuyenderedwa kamodzi pa mwedzi ngati njira imodzi yotetezera bulokoyi
- Anthu amene asankhidwa kugwira ntchito ayenera kunena zimene akumana nazo pa nthawi yomwe anali kugwira ntchito kulephera kutero ziphaso zonse zidzayenera kuchosedwa

NDONDOMEKO YA KUYANG'ANIRA

Ogwira ntchito za nkhalango ku ofesi ya boma adzaonetsetsa kuti a LFO akugwira ntchito yawo mwadongosolo popereka ziloledzo zolowera nkhalango mogwirizana ndi malamulo komanso ndondomeko yotsamalira nkhalango. A LFO ayenera kupereka ndondomeko ya mmene agwirira ntchito pakatha miyezi itatu iliyonse ku bungwe la mmudzi loona za nkhalango (LFMB) komanso kwa

mkulu woona za nkhalango ku boma (DFO). Padzikhwalanso kuunika ntchito imene yagwiridwa pakutha pa miyezi itatu pakati pa LFO ndi mkulu woona za nkhalango ku boma (DFO).

NKHANI YOKHUZA NDALAMA

Ndalama zonse zotolera ku zogulitsa za m'nkhalango zidzagawidwa mogwirizana ndi ndondomeko yoyendetsera komiti ya bulokoyi

UDINDO WOSAMALIRA BULOKOYI KOMANSO NTHAWI YAKE

Ndondomeko yoyan'anira nkhalangoyi idzidasamaliridwa ndi bungwe la kumudzi loona za nkhalango (LFO) lotchedwa Mponda Buloko Management committee la GVH Mponda mfumu yaikulu Kasakula m'boma la Ntchisi. Bungwe lolembesedwa la LFO lidzayang'nira ntchito ya buloko ya Mponda mothandizidwa ndi nthambi yoonza za nkhalango yak u boma.

Ndondomeko yoyang'anira nkhalangoyi idzayamba kugwira ntchito ikazangomalizidwa ndipo idzatha mmwedzi wa Januwale chaka cha 2019. Ndondomekoyi idzaunikidwa pa kutha pa miyezi itatu ndipo idzidzabweredzedwa pakutha pa dzaka zitatu

6.1NDONDOMEKO YA CHISAMALIRO CHA MITENGO YA MATABWA

- a) Phindu lochokera m'nkhalango ndi matabwa (Matabwa ndi ofunikira kwambiri)
: Zina ndi nkhuu monga zotsalira za kumatabwa

- (b) Mitundu ya mitengo yofunika kwambiri kugwiritsa ntchito matabwa ndi Mpasa, chiyere, mlombwa, mbawa, msenza, msenjere, mng'ona, mkulo, mpysipysa, kadale, msolo, kasokolowe, mtsewa, naphini, mmbanga, katope, nsanga ndi kamwamadzi.

- (c) Imafunikira motani mitengo ya matabwayi? Imafunika kwambiri

- (d) Mitengo ya matabwa imapezeka motani? Imapezeka kwambiri.

- (e) Zovuta zake za matabwa ndi njira zolakwika zimene anthu amatsata akafuna kupeza matabwa m'nkhalango, moto wachisawawa umene umaononga mitengo komanso kusowa kwa mitengo yofunikira.

- (f) **Chisamaliro cha nkhalango**

- a. Kudula mitengo ya matabwa, nkhuhi ndi phaso kudzachitika kumadera okhawo oyenera kudulidwa mitengoyi
- b. Otsadula mtengo wa nkhuhi wa uwitsi
- c. Kutentha nkhalango koyambirira kudzachitika chaka ndi chaka.
- d. Mitengo idzadulidwa ndi kusiya zitsa zotalika mlingo wa 20cm (pafupifupi kotalika kwa lula m'modzi) kuchokera pa dothi.
- e. Buloko idzayenera kutetedzedwa kwa dzaka zitatu pambuyo poti takolola ndi cholinga choti iphukirensa
- f. Zinyalala zidzayenera kutaidwa kutali kuopera moto wolutsa womwe ungalowe ndi kutetha dzitsa zomwe zingalepheretse mphukitra

g) **MALO A NKHALANGO OLOLEDWA KUDULAKO MITENGO PA CHAKA**

- Matabwa, phaso ndi nkhuhi zidzayenera kudulidwa mogwirizana ndi kasinthasintha wa bulokoyi
- Mitengo ya matabwa iyenera kufika mlingo wa 30 sentimita mu diyamita komanso idzikhala ya mu buloko ya pa nthawiyo
- Mitengo yomwe sinafike mlingo umenewu iyenera kusiyidwa

h) **ZILOLEZO ZOLOWERA MNKHALANGO**

Onse olova m'nkhalango kukafuna ndi kukapeza mitengo ya matabwa kapena matabwa ayenera kukhala ndi chilolezo cholembedwa chochokera ku Bungwe lakumudzi loona zankhalango la BMC.

i) **NDALAMA ZOLIPIRA PA PHINDU LOCHOKA M'NKHALANGO**

Gome lili pamunsipa likuonetsa mtengo wa ndalama zofuna kulipira pa mtengo uliwonse ochokera m'nkhalangoyi.

Ntchito ya mtengo	Mtengo wake pa mtengo uliwonse(MK)
Matabwa	15,000.00
Phaso	50.00
Nsichi	50.00
Mtanda	500.00
Mikangala	20.00

Nkhuni za pa mutu	50.00
Nkhuni za kwubiki mita	1,500.00

6.2NDONDOMEKO YA CHISAMALIRO CHA BOWA

- a) Phindu lochokera m'nkhalango ndi bowa
- b) Mitundu ya bowa ndi Chiwere, Chipindi, Mphofu, Manyame, Ndelema, Kamtsempha, Kasanza, Chamakala, Chisuku, Manda, Kapasa, Ngodzi, Katelera, Mkodzowagalu and Chabwalo.
- c) Amafunikira motani bowayi? Amafunika kwambiri.
- d) Bowa amapezeka motani? Amapezeka kwambiri.
- e) Zovuta zake ndi moto wachisawawa umene umaononga.
- f) **Chisamaliro cha nkhalango**
 - a. Kutenthera nkhalango koyambirira kudzachitika chaka ndi chaka.
 - b. Aliyense ndi wololedwa kudzula bowa m'nkhalangoyi bola ngati atakatenga chiloledzo ku chokera ku bungwe loyang'anira za nkhalango la mudzi (BMC)
- g) **MALO A NKHALANGO OLOLEDWA KUDZULAKO BOWA**
Bowa azidzakololedwa mnkhalango yonse ngati chiloledzo chaperekedwa kuchokera ku bugwe Loyang'anira nkhalango la mmudzi (BMC)
- i) **NDALAMA ZOLIPIRA PA PHINDU LOCHOKA M'NKHALANGO**
Kudzula bowa nkhalango ndi kwa ulere bola ngati **chiloledzo chaperekedwa kuchokera ku bugwe Loyang'anira nkhalango la mmudzi (BMC).**

6.3NDONDOMEKO YA CHISAMALIRO CHA ZIPATSO

- a) Phindu lochokera m'nkhalango ndi zipatso. Zipatsozi ndi zofunikira kwambiri]
- b) Mitundu ya zipatso yomwe imapezeka kwambiri ndi Masuku, Mpatsachiuno, Chiwere, Nthudza, Thundu, Maye, Katope, Mgunkhumwala, Mayembeyembe, Yembe, Machendeakalulu and Maula.
- c) Zimafunikira motani zipatso? Zimafunika kwambiri.
- d) Zipatsozi zimapezeka motani? Zimapezeka kwambiri.

- e) Zovuta zake ndi njira zolakwika zimene anthu amatsata akafuna kupeza zipatso m'nkhalango komanso moto wachisawawa umene umaononga mitengo yopereka zipatsozi.

f) **Chisamaliro chabwino cha zipatso za m'nkhalango**

- Kumaonetsetsa kuti mitengo ya zipatsizi tsikudulidwa.
- Kumathyola zipatsozi pokhapokha ngati zikacha.
- Aliyense wofuna kukathyola zipatso m'nkhalangoyi ayenera kutenga chilolezo kuchokera ku bungwe la MpondaBMC asanapite kukafuna zipatso ku nkhalango.

g) **ZIPATSO ZOLOLEDWA KUTHYOLEDWA PA CHAKA**

Anthu adzapeza zipatso kuchokera m'nkhalangoyi chaka chonse bolani ngati chilolezo cholowera ku nkhalangoyi chaperekedwa ndi bungwe la Mponda BMC.

h) **ZILOLEZO ZA OKAFUNA ZIPATSO M'NKHALANGO**

Kukatola ndi kukathyola zipatso m'nkhalangoyi ndi kwa ulele bolani ngati chilolezo chaperekedwa ndi bungwe la Chanika BMC

i) **NDALAMA ZOLIPIRA PA ZIPATSO ZOKATENGEDWA M'NKHALANGOYI**

Zipatso ndi za ulele.

6.4NDONDOMEKO YA CHISAMALIRO CHA MITENGO YA LUZI

- a) Phindu lochokera m'nkhalango ndi udzu
- b) Mitundu ya udzu yofunika kwambiri ndi Chimphonje, Kafupa, Katsichi, Msokosere, Fipe and Msenjere.
- c) Udzu limafunikira motani? Umafunika kwambiri.
- d) Umapezeka motani? Umapezeka kwambiri.

- e) Zovuta zake ndi moto wachisawawa umene umaononga udzu mkhalangoyi

f) **Chisamaliro cha udzu**

- (a) Kutenthera nkhalango koyambirira kudzachitika chaka ndi chaka

g) **KUKULA KWA DERA LOKOLOLA UDZU PA M'NKHALANGO PA CHAKA**

Udzu udzakololedwa m'dera lonse la buloko ya Mpondabolani ngati malamulo a Bungwe la Mponda loona za nkhalango la kumudzi(BMC) akutsatidwa.

h) **CHILOLEZO CHA UDZU KUNKHALANGO**

Aliyense ndi woyenera kupeza chilolezo kuchokera ku Bungwe la Mponda loona za nkhalango la kumudzi (BMC).

i) **NDALAMA ZOLIPIRA KUSENDA LUZI M'NKHALANGOYI**

Kukasenda udzu m'nkhalangoyi ndi kwa ulele bolani ngati chilolezo chaperekedwa ndi bungwe la Mponda BMC

6.5NDONDOMEKO YA CHISAMALIRO CHA MANKHWALA AZITSAMBA

- a) Phindu lochokera m'nkhalango ndi mankhwala azitsamba
- b) Mitengo ya mankhwala a zitsamba yofunika kwambiri mwa ina ndi Mmbanga, Palibekanthu, Chikoka, Muwawani, Chiyere, Mdimba, Mpetu, Futukulu, chiwowo, mvunguti, Kangelute, mtunda, kanamphangale, mtsiloti, Tsitsimzukwa, Chimwemwe, chiumilire ndi mpatsachiuno
- c) Amafunikira motani mankhwala azitsambawa? Amafunika kwambiri.
- d) Amapezeka motani mankhwala azitsambawa? Amapezeka kwambiri.
- e) Zovuta zake za mankhwala a zitsamba ndi
 - Kupeza mitengo ya mankhwala azitsambawa m'njira yosasamala zachilengedwe kuti ikulenso. Mwachitsanzo kukungunula chikhungwa cha mtengo kukakonzera m'ng'oma wa njuchi. Izi zimaumitsa mtengo.
 - Kubedwa kwa mitengo ina ya mankhwala m'nkhalango.
 - Moto wolusa woponyedwa mochedwa kutauma umene umaononga ziphukira zonsezi mankhwala a zitsamba.
- f) **Chisamaliro cha mitengo ya mankhwala a zitsamba**
 - Kugwetsa mtengo wa mankhwala ndi kotrsaloledwa
 - Yense wotenga chilolezo kuti akakumbe mankhwala a zitsamba ayenera kukwirira dzenje lililonse limene angakakumbe.
 - Madera onse amene ali ndi ziphukira za zitsamba za mankhwala ayenera kutetezedwa ku moto.
 - Anthu ayenera kudula midzu iwiri yokha basi pa mtengo uliwonse ku opera kuonongeka kwa mitengo ya zitsambayi
- g) **DERA LOVOMEREZEDWA PA CHAKA KUPEZA MITENGO YA MANKHWALA A ZITSAMBA M'NKHALANGO**

Kupeza mankhwala a zitsamba mnkhalango kudzachitikamdera lonse la Buloko ya Mponda BMC bolani ngati malamulo ake akutsatidwa.

h) CHILOLEZO CHA KUNKHALANGO

Aliyense ndi oyenera kupeza **mankhwala a zitsamba kuchokera m'nkhalangoyi bolani ngati ali ndi chilolezo chochokera ku BMC.**

i) NDALAMA ZOLIPIRA POFUNA MANKHWALA A ZITSAMBA A M'NKHALANGOYI

- Aliyense wofuna **mankhwala a zitsamba** wochokera mu dera la GVH Mpondasadzalipira kanthu ngati akufuna kugwiritsa ntchito pa khomo.
- Wina aliyense wofuna mankhwala ndi cholinga chogulitsa adzalipira ndalama K1,500 pa chilolezo chimodzi

7.0ZOFOTOKOZERA ZONSE ZIMENE ZALEMBEDWA

- a. Zofotokozera mutu woyamba- Malamulo
- b. Zofotokozera mutu Wachiwiri- Mgwirizano

MUTU WOYAMBA: MALAMULO A MGWIRIZANO WOSAMALIRA LIMODZI BULOKO YA CHANIKA

DZINA LA LFO: BUNGWE LOYANG'ANIRA BULOKO YA MPONDA

DZINA LA BULOKO: Mponda

KEYALA: C/O Group Village Headman Mponda
Traditional Authority Kasakula
Katete F.P. School
P/A Chinthembwe
Ntchisi

MANAMBALA A FONI: 0998271917/0993223329/0993352897/09918271915/0997943446

1.0 CHOLINGA

Kukwaniritsa zolinga za anthu a mudzi wa GVH Mponda ndi ina yozungulira kupeza zofunika nkhalangoyi monga: matabwa, uchi, nkhu, phaso, mankhwala komanso zipatso.

2.0 NDONDOMEKO YAKE

- 2.1 Pazikhala komiti yosankhidwa yokhala ndi anthu okwana khmi limodzi mphambu zisanu ndi chimodzi (16) monga mlembi ndi wachiwiri wake, msungi chuma komanso ndi mamembala ena 1.
- 2.2 Anthu amukomitiyi azisankhidwa ku chokera mmidzi yonse yotenga nawo mbali pa bulokoyi monga: Mponda, Kambandanga I, Kambandanga II, Mkunthira, Gunda, Mataka, Nankhombo I komanso Nankhombo II.
- 2.3 Anthu osankhidwawa adzikhala amene akutenga nawo mbali posamalira bulokoyi ncholinga choti aziimirira anthu a mmudzi mwawo.

Pamene mafumu onse otchulidwa ndi a GVH Mponda azikhala ngati mamembala opuma a mu komitiyi

3.0 ZISANKHO

- 3.1 Zisankho ziyenera kuchitika mwa ulele komanso mosakondera ku midzi yonse 8 ndi wa GVH.
- 3.2 Zisankho ziyenera kuchitika pakatha zaka zitatu zilizonse kupatulapo ngati komiti yonse ya chosedwa kapena mamembala ena anhosedwa, amwarira kapena asiya kugwira ntchito.
- 3.3 Anthu amene asankhidwa ayenera kugwira ntchito kwa zaka zitatu ndipo ayenera kuledwa kuimanso ngati anagwira ntchito bwino.
- 3.4 Anthu onse a mkomitiyi ayenera kuchosedwa ngati sanayendetse bwino ntchito zawo popeza anthu a mudzi ndi omwe ali ndi udindo woteteza ndi kusamalira bulokoyi.

NTCHITO ZA MAMEMBALA OSANKHIDWA

Wapampando ndi wachiwiri wake

Ntchito zawo

- Kuchititsa misonkhano
- Kukonza mitu ya zofunika kukakambirana ku msonkhano

- Mogwirizana ndi mafumu a mudzi ayenera kukonza ndi kuitanitsa msonkhano
- Kulandira zochitika kuchokera kwa mlembi
- Kukhala m'modzi wa osainira pakakhala zinthu zofunika kutapa ndalama ku banki

MLEMBI NDI WACHIWIRI WAKE

Ntchito zawo

- Kulemba zokambirana pa nthawi ya misonkhano uliwonse (maminitisi)
- Kulemba makalata oitana anthu pakafunika misonkhano
- Kuwerenga maminitisi a mfundo zonse za msonkhano umene udachitika m'mbuyo mwa msonkhano umene ukufuna kuchitikawo
- Kukhala m'modzi wa osainira pakakhala zinthu zofunika kutapa ndalama ku banki
- Kulondoloza ndi kulinganiza zimene Msungi chuma akulemba
- Kulemba ndi kusunga zolembedwa za katundu yense wa gululi

MSUNGICHUMA

Ntchito zake

- Kusunga ndalama ndi katundu wa gulula Mamembala a Buloko ya Mponda
- kusunga zolembedwa zonse zokhudza ndalama ndi katundu
- Kukhala m'modzi wa osainira pakakhala zinthu zofunika kutapa ndalama ku banki
- Kupereka malipoti a za chuma zonse kwa anthu onse m'derali
- Kupereka ziloledzo zolowera nkhalango

MAMEMBALA A BUNGWE

Ntchito zawo

- Kuthetsa mikangano yobuka pakati pawo
- Kuthandiza kukonza mitu ya zofunika kukakambirana ku msonkhano
- Kuimirira Gulu lawo kukafunikira kutero

Ntchito ndi udindo wa anthu ena onse m'dera la Buloko ya Chanika

3.5 A GULUPU A MMUDZI NDI NAFUMU ENA AYENERA;

- Ayenera kugwiritsa ntchito udindo wawo moyenera pa chilichonse chochitika mu bulokoyi.
- Kuthandiza kuthetsa mkangano umene ulipo womwe a komiti alephera kuuthetsa.
- Kuthandiza a komiti ya bulokoyi pamene pa kufunikira kutero

3.6 MKULU WOONA ZA NKHALANGO KU BOMA

- Kupereka chithandizo ndi zofunika pa ntchito ya komitiyi yoyang'anira bulokoyi.
- Kuyang'anira zisankho za komiti yoyang'anira bulokoyi
- Kuthandizira pa kauniuni ndi kalondolondo wa ndondomeko yo samalira bulokoyi
- Kuongolera popanga ndondomeko yosamalira nkhalango

3.7 ANTHU ONSE MMUDZI

- Ayenera kutenga nawo mbali pobzala mitengo, kutenthera koyambirira, kutemgulira mitengo, kukonzatso malire a moto ndi ntchito zina zimene a komiti anena.
- Ayenera kutenga nawo mbali pa zisankho ndi kuchotsa mamembala pa udindo.

4.0 NTCHITO ZA A KOMITI NDI IZI:

- Ayenera kukumana pa mwezi kamodzi kuti akambirane kasamaliridwe ka bulikoyi.
 - Ayenera kukumana pa mwezi kamodzi kuti akambirane zosatira
 - Kukodza malamulo akagwiritsiridwe ntchiyo ka zinthu, zilango zake mogwirizana ndi a GVH, VH komanso anthu onse mmudzi.
 - Kukonza ntchito zonse za mu bulokoyi mogwirizana ndi ntchito zimene akupereka, mkulu woona za nkhalango m'boma, GVH komanso mmidzi yonse 8 yozungulira.
 - Kupereka zilolezo kwa anthu kuti akatenge zofunikira zawo mu bulokoyi.
- Kuunika ndondomeko yosamalirira nkhalango pokutha pa zaka zitatu zilizonse komanso kuunika malamulo chaka chilichonse. Zomwe zaunikidwanso zizaperekedwa kkwa a mfumu a mmudzi ndi ma gulu ena otsangalala ndi ntchitoyi komanso ku anthu onse a mmudzi

KAYENDETSSEDWE KA NDALAMA

- Ndalama zonse zizagawidwa motere:

- 60% izapita ku akaunti ya buloko
- 30% izapita ku akaunti ya boma
- 10% izapita ku akaunti ya bungwe lalikulu loyang'nira nkhalango (LFMB)
- Ndalama zonse zotolera zopita mu buloko zizagwira ntchito izi:
 - Kubwereketsa kwa ofuna ngongole zazing'onozing'ono (50%)
 - Kuyendetsa ntchito za Buloko ya Mponda(20%)
 - Kuthandizira ku VDC (30%)

CHENJEZO

- Ndondomeko ya ntchito zosamalira nkhalango ndi monga: kupanga malire, kutchetcha, kuyendera buloko, kuika malire ndiponso kupereka ziloledzo zolowera nkhalango.
- Anthu amidziyi ayenera kumatenga ngongole kuti azichita ma bizinesi ang'onoang'ono ndi cholinga chotukula miyoyo yawo. Ngongoleyi idzikhala ndi chiongola dzanja cha 20%
- Payenera kukhala komiti yaing'ono yoyang'anira ngongoleyi yoyang'aniridwa ndi sungichuma.

MAYINA A ANTHU OSAMALIRA BULOKO YA MPONDA

NAMBALA	DZINA LA MEMBALA	UDINDO	MUDZI
1	Faliot Siwande	Chairperson	Mataka
2	Geleva Paulo	Vice Chairperson	Mponda
3	Nason Vingson	Secretary	Nankhombo II
4	Malita Moyo	Vice Secretary	Kambandanga I
5	Gledia Nikisi	Treasurer	Mponda
6	Alick Rabson	Membala	Mataka
7	Naomi Mangawa	Membala	Nankhombo II
8	Edson Ziyenda	Membala	Nkhunthiwa
9	Maganizo Nyamulani	Membala	Gunda
10	Fatuma Matafale	Membala	Kambandanga II
11	Custom Matafale	Membala	Kambandanga II
12	Mateyu Falison	Membala	Nankhombo I
13	Skenala Mulinga	Membala	Kambandanga I
14	Maria Penyani	Membala	Nankhombo I
15	Chimwemwe Buleki	Membala	Nkhunthiwa
16	Elia Thumunda	Membala	Gunda
17	Leonard Nkhudzule	Mlangizi	Mponda
18	Chinyama Nkhudzule	Mlangizi	VH Mponda
19	Mazon Chaora	Mlangizi	VH Nankhombo I
20	Joseph Vingson	Mlangizi	VH Nankhombo II

21	Kazula Phiri	Mlangizi	VH Kambandanga I
22	Sinoya Jonasi	Mlangizi	VH Gunda
23	Malison Stephano	Mlangizi	VH Kambandanga II
24	Kwiyani Nekisani	Mlangizi	VH Nkunthiwa
25	Chichitike Zakeyo	Mlangizi	VH Mataka

OSAYINIRA

Wosainira

Tsiku

.....

.....

Wapampando wa Buloko ya Chanika

.....

.....

GVH (Ogulupu)

.....

.....

Mwinimtunda /Chalo (T/A)

.....

.....

Bwanamkubwa wa Boma la Ntchisi (DC)

ZOFOTOKOZERA MUTU WACHIWIRI:

13.0MGWIRIZANO PACHISAMALIRO CHA NKHALANGO PAKATI PA BOMA NDI ANTHU

13.1MGWIRIZANO WOYENDE TSA LIMODZI NTCHITO ZACHISAMALIRO CHANKHALANGO

(Lamulo la zankhalango, la 1997, Gawo 25)

Pangano lino lakonzedwa tsiku la lero pa..... mwezi wa..... Pakati pa Wamkulu wowongolera Zankhalango, miyala ndi migodi M'Malawi, amene akuimirira Boma la Malawi ndi nzika zonse zokhala m'dera la mudzi/midzi iyi.....ya Mwinimtunda (T/A).....boma la kuimiridwa ndim'malo mwa Bungwe la kumudzi loona zankhalango[limene muno likutchedwa kuti (LFO) komanso lodziwika ndi Dzina la Bungwe La Chigawo Chachikulu Losamalira za Nkhalango (BMC). Pano Boma likupanga mgwirizano ndi LFO kupereka mwayi woyendetsera limodzi ntchito zankhalango molumikizana ndi Maofesi a Boma oona za nkhalango (Forestry Dept.) pa zinthu zonse zofunikira zochokera mu Buloko ya nkhalango yosungidwa yandi cholinga chopititsa patsogolo chisamaliro cha nkhalango chosalekeza komanso kulimbikitsa kupititsa patsogolo miyoyo ya anthu okhala m'madera oyandikana.

Mu Mgwirizano uno zimene tagwirizana ndi izi:

- Pakukhutitsidwa ndi dongosolo la m'mene likuyendetsera ntchito Bungwe la kumudzi loona zankhalango (LFO), Boma la Malawi lidzavomereza ndi kupereka mphamvu ku bungweli kuti liteteze, lisamalire ndi kuongolera kayendetsedwe kabwino ka nkhalango mosaonongeratu koma mosungako mathandizo ena a mawa kuchitira ubwino aliyense wa m'dera lam'mudzi
wa.....
- Bungwe la kumudzi loona zankhalango lidzavomereza ndi kukhala ndi udindo woteteza, kuyendetsa, kuongolera ndi kugwiritsa ntchito bwino zinthu zochokera m'nkhalango mosaonongeratu koma mosungako mathandizo ena a mawa monga mwa malamulo ndi mfundo zimene zokhazikitsidwa mu mgwirizano lino komanso mu ndondomeko ya chikonzero cha mgwirizano pakasamalidwe ka nkhalango imene yayikidwa pamapeto pa chikonzerochi.

UDINDO WA BUNGWE WA LAKUMUDZI LOONA ZA NKHALANGO

- Mwa paderadera Boma la Malawi likupereka mphamvu ku Bungwe la kumudzi loona zankhalango (LFO) ngati izi zitatsatidwa motere:
 - i. Ngati nkhalango idzasungidwa ndi kusamalidwa monga mwa njira zovomerezeka za chisamaliro cha nkhalango zimene zaikidwa mu ndondomeko ya chikonzero cha mgwirizano pa kasamalidwe ka nkhalango pamapeto pa chikonzerochi.
 - ii. Bungwe la kumudzi loona zankhalango lidzaonetsetsa kuti mphamvu zimene linalandira kuchokera ku Boma la Malawi mu malamulo a zankhalango a m'chaka cha 2001 ndi ena otsatira zikugwira monga mwa mgwirizano wolembetsa Bungwe la kumudzi loona zankhalango.
 - iii. Bungwe la kumudzi loona za nkhalango (LFO) lidzateteza, lidzayendetsa, lidzaongolera ndi kugwiritsa ntchito bwino mathandizo osiyanasiyana a m'nkhalango m'njira ya chisamaliro chosungako zina molingana ndi mphamvu zimene adapatsidwa. Bungweli lidzaperekanso zilolezo ndi ziphaso za zinthu zonse zochokera m'nkhalango zimene kwenikweni zimathandiza anthu m'madera awo komanso pa nthawi yokolola zambiri pamene afuna kukagulitsa monga m'mene zafotokozeredwa mu chikonzero cha chisamaliro cha nkhalango

- iv. Pothandiza Wamkulu woona zankhalango pa boma (DFO), Bungwe la kumudzi loona zankhalango (LFO) lidzapereka makalata ochitira umboni (makalata osonyeza umwini wa chinthu), kuvomereza kumene munthu wakatenga zochokera m'nkhalango ndi umwini wa katundu amene ali kuyang'aniridwa ndi bungweli. Bungweli likhoza kuthandizanso aliyense wofuna kalata ya umboni ngati ali ndi zinthu zofuna kugulitsa zochokera ku mitengo ya m'nkhalango pakulipempha Kalata yochokera kwa Wamkulu woona zankhalango pa boma (DFO)
- v. Mathandizo onse ochokera m'nkhalango adzagwiritsidwa ntchito mofanana ndi onse okhala m'derali molingana ndi ndondomeko zake za kugawana phindu lochokera mu nkhalango monga mwa chikonzero ndi malamulo a Bungwe la kumudzi loona za nkhalango (LFO).
- vi. Ndalama zonse zotolera kuchokeraa m'nkhalango zidzagawidwa mofanana ndi onse okhala m'derali molingana ndi ndondomeko zake za kugawana phindu lochokera mu nkhalango monga mwa chikonzero ndi malamulo a Bungwe la kumudzi loona za nkhalango (LFO).
- vii. Magawo khumi mwa magawo zana limodzi (10%) a ndalama zotolera ku zilolezo ndi ziphaso pa phindu lobwera chifukwa chogulitsa zinthu za m'nkhalango zidzaikidwa mu buku la ku banki la oyang'anira za nkhalango ya ku mudzi laLFMB (Local Forest Management Board) ndipo izi zizidzachitika miyezi itatu ili yonse.
- viii. Magawo makumi atatu mwa magawo zana limodzi (30%) a ndalama zotolera ku zilolezo ndi ziphaso pa phindu lobwera chifukwa chogulitsa zinthu za m'nkhalango zidzaikidwa mu buku la ku banki nambala wani la Thumba la Chitukuko zinthu zochokera m'nkhalango ya ku mudzi (Forest Development Fund Account) ndipo izi zizidzachitika miyezi itatu ili yonse.
- ix. Ndi choyembekezeka kuti magawo makumi asanu ndi limodzi mwa magawo zana limodzi (60%) a ndalama zotolerredwa ndi Bungwe la kumudzi loona zankhalango (LFO) zogawana zitachitika monga m'mene zafotokozedwera pamwambapa pa (g) ndi (h) 60% imeneyi idzagwiritsidwa ntchito ndi a bungweli pa chitukuko cha nkhalango, chisamaliro ndi kuyendetsera ntchito za nkhalango. Padzakhala kugwiritsa ntchito ndalamazi mkati ndi kunja komwe kwa dera la mgwirizano woyendetsera Buloko ya Mpanang'ombe.

- x. Bungwe la kumudzi loona zankhalango (LFO) lidzaonetsetsa kuti zolembedwa zonse za ndalama ndi zilolezo zonse zimene zaperekedwa zikupezeka mosavuta akadziwitsidwa kuti akuzifuna Wamkulu wa zankhalango m'Malawi ku unduna woona za nkhalango (**Director of Forestry**) wachiwiri wake kapena Bwanamkubwa (DC) atauzidwa ndi Wamkulu wa zankhalango m'Malawi kapena Bwanamkubwa (DC).
- xi. Bungwe la kumudzi loona zankhalango (LFO) lidzaimirira anthu onse a m'dera lake ndi kukhala ndi udindo woyankha china chilichonse chimene anthuwo angafunse pa ntchito yake m'deramo ndipo bungweli lidzayendetsanso ntchito zakezo monga mwa malamulo okhazikitsidwa a zankhalango amene adavomerezedwa.

UDINDO WA DIPATIMENTI YOONA ZA NKHALANGO

- Mwapaderadera wamkulu woona zankhalango pa boma (DFO) ndi onse omuimira pantchito yake adzayenera
 - a) Kupereka maluso a ntchito yawo ndi kulimbikitsa ntchito yokwaniritsira zolinga zosamalira nkhalango limodzi ndi Bungwe la kumudzi loona zankhalango (LFO) ndi kuunikanso mu nthawi yabwino ndondomeko ya chikonzero cha mgwirizano pakasamalidwe ka nkhalango yoikidwa kumapeto kwa zonsezi.
 - b) Kulangiza ndi kuthandiza m'njira zosiyanasiyana pochita kalondolondo pa kayendetsedwe ka ndalama za nkhalango kuphatikizapo kuchititsa misonkhano, zisankho zazikulu ndi zazing'onozing'ono, kusunga zolembedwa zonse za pamisonkhano, kulongosola kayendetsedwe ndi chisamaliro cha katundu ndi ndalama za Buloko ya Mpanang'ombe komanso kulemba malipoti.
 - c) Kupereka zinthu zosiyanasiyana zofunikira kuyendetsera ofesi ya Bungwe la kumudzi loona zankhalango(LFO) {utangovomerezedwa mgwirizano unowu pa kusainira} monga mabuku a ndalama zolowa ndi kutuluka m'thumba la ndalama (**cash books**), mabuku olembamo zonse zogwirizana pa misonkhano (**Minute books**), makalata a zilolezo amene amakhala awiriawiri, mapepala olembapo Kalata za ofesi amene amakhala oikiratu keyala (adiresi), chidindo cha ofesi ya Bungwe la kumudzi loona zankhalango (LFO) kapena

chizindikiro china chapaderadera cha ofesiya ndi zinthu zina zofunikira ndi cholinga cholimbikitsa kuchita zinthu mosabisa ndi kulemba zonse za chisamaliro ndi kayendetsedwe koyenera ka zinthu za nkhalango komanso kukhazikitsa dongosolo labwino la kaperekedwe ka ziphaso pa katundu wochokera m'nkhalango. Zikuyembekezeka kuti bungweli lidzachita ntchito yokagula katundu ameneyu pokhapokha kutolera ndalama kutachitika.

- d) Kuthandiza kulumikizana pantchito zolimbikitsa malamulo a zankhalango kumene kumakhalapo pakati pa Bungwe la kumudzi loona zankhalango (LFO), mafumu, anthu eni dera, magulu olimbikitsa bata poyendera m'dera, ogwira ntchito m'boma a zachitetezo ku madera, wamkulu woweruza milandu pa boma motsata ndondomeko ya chikonzero cha mgwirizano pakasamalidwe ka nkhalango imene yaikidwa kumapeto kwa zonsezi.
- e) Kuyendera limodzi ndi Bungwe la kumudzi loona zankhalango (LFO) malire a Buloko amene adalembedwa mu ndondomeko ya chikonzero cha mgwirizano wosamalira zachilengedwe m'nkhalango kuti chisamaliro chikhale monga m'mene zilili mu mgwirizano uno komanso monga m'mene zilili poona mlingo ndi mfundo za ndondomeko yakutengako gawo pa ntchito zankhalango muno m'Malawi.
- f) Kugwira ntchito limodzi pomasainira zilolezo ndi ziphaso za katundu wochokera m'nkhalango kusonyeza kuvomereza ntchito imene yachitika ya katundu wokagulitsidwa kapena kukagwiritsira ntchito ya m'makomo ngati munthuyo waguladi potsatira ndondomeko ya m'chikonzero chimene chilipo cha mgwirizano pakasamalidwe ka zachilengedwe za m'nkhalango.
- g) Kupereka makalata ochitira umboni polinganiza ndi makalata otsimikizira pa katundu amene adatulutsidwa kuchokera m'nkhalango motsatira ndondomeko yokhazikitsidwa popereka ziphaso kuti pakhale kutulutsa katundu wochokera m'nkhalango movomerezeka.
- h) Kupereka matandizo osiyanasiyana ku Bungwe la kumudzi loona za nkhalango (LFO) mogwirizana ndi Ogwira ntchito za chisamaliro cha zachilengedwe, malangizo okhudza za milandu pa katundu wochokera m'nkhalango, kuthandiza pa kayendetsedwe ka bungwe ndi kagulitsidwe ka zinthu zachilengedwe za m'nkhalango monga m'mene kufunikira.

- i) Kupangitsa misonkhano yophunzitsa anthu kwa masiku angapo kuti adziwe ndi kupititsa patsogolo maluso osiyanasiyana pa kayendetsedwe ka bungwe, maluso a zamanja, ndi kuthekera kwawo pa kayendetsedwe ka bungwe loyang'anira bungwe loyendetsa za nkhalango ya kumudzi (LFO), kupititsa patsogolo kuthekera kwawo ma Chalo (T/A) ndi Mamembala ena a m'derali.
- j) Kuvomereza ndi kulimbikitsa kuti pakhale chitetezo ndi njira zobweretsera bata ndi mtendere zimene mabungwe a FMB ndi LFO amatsata pamodzi ndi ena onse m'derali motsatira Lamulo la zankhalango la 1997, komanso m'ndandanda wa malamulo ang'onoang'ono ena a 2001 ndi mgwirizano wolembetsera bungwe la zankhalango ya kumudzi (LFO Registration Agreement)

13.2CHIAMBI, KUTALIKA KWA NTHAWI YAKE NDI KUTHA KWAKE KWA MGWIRIZANO

- Mgwirizano uno udzayamba kugwira ntchito ukadzangovomerezedwa (ukadzangosainidwa) ndi wamkulu woona zankhalango M'Malawi (Director of Forestry), Oimirira magawo osiyanasiyana a zankhalango, ndipo udzakhala ukugwira ntchito mpaka muyaya monga m'mene mfundo 6 ndi 9 zikunenera m'munsimu.
- Wamkulu woona zankhalango m'Malawi (DOF) adzakhala nazo mphamvu zothetsera mgwirizano uno ndi kuchotsa onse a m'maudindo awo ndi cholinga choteteza, kuyendetsa, kuongolera ndi kugwiritsa ntchito bwino zinthu zonse zochokera m'nkhalango pokhapokha patachitika izi :
 - i. Ngati pali kutayirira kapena kulephera kuteteza, kuyendetsa, kuongolera ndi kugwiritsa ntchito bwino Buloko ya Chanika.
 - ii. Ngati bungwe loyendetsa za nkhalango ya kumudzi (LFO) lopezeka litaphwanya kwakukulu mgwirizano uno.
- Mphamvu zimene zaperekedwa pa mfundo 6 pamwambapa sizoyenera kuzigwiritsa ntchito **pokhapokha** Wamkulu woona zankhalango m'Malawi (DOF) **atayesetsakwathunthu ndi kukanika** njira **zonse** zimene akhoza kufufuza kuti athetsere mwa mtendere zovuta zimene zinalipo pa nthawiyo.

- Pa kuchenjeza anthu a m'derali, Wamkulu woona zankhalango M'Malawi (DOF) adzayenera kunena zofooka ndi kupereka njira ndi kutalika kwa nthawi zokonzera zofookazo.
- Bungwe loyendetsa za nkhalango ya kumudzi (LFO) likhoza kuthetsa mgwirizano uno nthawi ina ili yonse popereka chidziwitso chosachepera masabata asanu ndi atatu (8 wks) pokhapokha patachitika izi:
 - i. Pokhapokha ngati pali kuphwanya Kwakukulu kwa mgwirizano uno
 - ii. Ngati anthu a m'derali ataona kuti alephera pa zifukwa zawo kapena ataona kuti sakufuna kupitiriza ntchito zokhazikitsidwa za chisamaliro cha nkhalango chochitira limodzi ndi Boma mu Buloko ya Chanika.
- Pamene chidziwitso chothetsera mgwirizano chaperekedwa, Bungwe loyendetsa za nkhalango ya kumudzi (LFO) lidzakhala ndi udindo wowonetsetsa kuti dera la nkhalango ndi lotetezedwa mpaka pamene bungwe losamalira nkhalango kapena Boma litatenganso udindo wake pa Buloko imeneyi.
- Zigawo za madera okhazikitsidwa a nkhalango zidzaonetsedwa monga m'mene zilili pa mapu ongolemba pamanja amene amapanga nawo gawo la Chikonzero cha kasamalidwe ka zankhalango zimene zafotokozedwa mu mgwirizano uno wa chisamaliro cha nkhalango woyendetsera limodzi ndi Boma

13.3NTCHITO YOLEMBA NDI KUIKA MALIRE MIKANGANO

- Pamene mkangano wa zankhalango ubuka mgwirizano uno ulipo, nkhani yotere idzaprekedwa kwa anduna a za nkhalango amene ali woyenera kuweruza ndi kuthana ndi zoterezi. Koma ngati wina sakhutitsidwa ndi chigamulo cha andunawa, ali ndi ufulu wokamang'ala ku bwalo lina lalikulu (la High Court).
- Ovomereza

.....

Tsiku.....

Wamkulu wa Zankhalango (DOF)

.....

Tsiku.....

Wapampando wa Bungwe la kumudzi la zankhalango (LFO)

.....Tsiku.....

.....

OCHITIRA UMBONI (MBONI ZAKE)

.....Tsiku.....

.....

A mfumu a m'mudzi (Nyakwawa VH)

.....Tsiku.....

.....

Mwinimtunda/Gogo/Chalo (T/A)

.....Tsiku.....

Bwanamkubwa wa Boma lonse (DC)

.....

POTHERA!

M P O N D A

13.3 NTCHITO YOLEMBA NDI KUIKA MALIRE MIKANGANO

- Pamene mkangano wa zankhalango ubuka mgwirizano uno ulipo, nkhani yotere idzaprekedwa kwa anduna a za nkhalango amene ali woyenera kuweruza ndi kuthana ndi zoterezi. Koma ngati wina sakhutitsidwa ndi chigamulo cha andunawa, ali ndi ufulu wokamang'ala ku bwalo lina lalikulu (la High Court).

- Ovomereza

Tsiku.....

Wamkulu wa Zankhalango (DOF)



Tsiku.....

Wapampando wa Bungwe la kumudzi la zankhalango (LFO)

Felipeti Siwande

Tsiku 02/04/2014

OCHITIRA UMBONI (MBONI ZAKE)

G.V.H. Mponda

Tsiku 2-4-2014

A mfumu a m'mudzi (Nyakwawa VH)

STA. KASAKULA Ita

Tsiku.....

Mwinimtunda/Gogo/Chalo (T/A)



Tsiku.....

Bwanamkubwa wa Boma lonse (DC)

A Misomali

